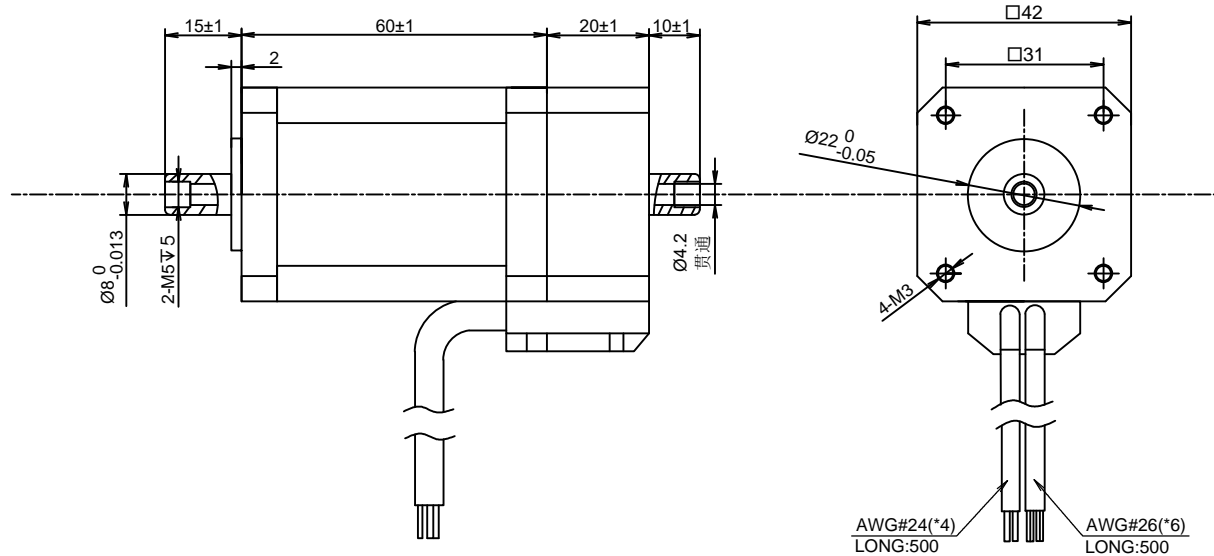
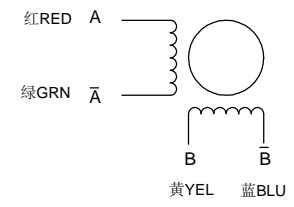


RoHS

A
B
C
D
E



接线图 WINDING DIAGRAM



励磁顺序（两相励磁）VS旋转方向
EXCITING SEQUENCE(TWO PHASES)
VS.DIRECTION OF ROTATION

STEP	A	B	A̅	B̅	
1	+	+	-	-	CCW ↑
2	-	+	+	-	
3	-	-	+	+	
4	+	-	-	+	

从电机安装面看为顺时针
CLOCK WISE VIEW FROM MOUNTING SIDE

电机参数 MOTOR SPECIFICATIONS	
步进角 STEP ANGLE	1.8°±5%
额定电流 RATED CURRENT	2.0 Amps/PHASE
保持力矩 HOLDING TORQUE	0.7N.m
电阻 RESISTANCE	1.5 ohm±0.15 AT 25°C
电感 INDUCTANCE	2.8 mH±20% AT 1kHz, 1Vrms
转子惯量 ROTOR INERTIA	115g.cm2
绝缘等级 INSULATION CLASS	CLASS B
绝缘耐压 DIELECTRIC STRENGTH	500V A.C 1MINUTE
绝缘电阻 INSULATION RESISTANCE	100MΩ@500VDC
径向跳动最大 RADIAL RONOUT MAX	0.025mm
轴向跳动最大 AXIAL RONOUT MAX	0.075mm
步距角误差 STEP ANGLE ERROR	0.09
环境温度 OPERATING TEMPERATURE	-20°C~+50°C
温升 Heat Rise	80K

编码器接线表(1000线)	
描述	颜色
+5VCC	白/WHT
EGND	黑/BLK
EA-	绿/GRN
EA+	红/RED
EB-	蓝/BLU
EB+	黄/YEL

YYWWXXXXX

Stator barcode label



电机型号 MOTOR CODE	UNIT: mm				
EW17-520H-E1000	UNLESS OTHERWISE SPECIFIED TOLERANCES /DIMENSIONS: ±0.3mm /DEGREES: ±5%				
步进电机规格书	电机检验标准 / Motor inspection standard: QC-ZL-011	REV. DATE	first version	Luffy	APPROVED John
			REVISIONS	BY	